



P R E S S U R E  
T E M P E R A T U R E  
L E V E L  
I N S T R U M E N T A T I O N  
F L O W  
A N A L Y T I C A L

**Holland**<sup>®</sup>  
**APPLIED TECHNOLOGIES**  
Indianapolis • Chicago • San Juan  
[www.hollandapt.com](http://www.hollandapt.com)  
800-800-8464

## "SX" Level Transmitter

**New technology proven to eliminate long-term signal drift —  
provides substantial savings in all inventory applications!**

### "Driftless" transmitters mean:

- *Fewer tune-ups*
- *No more overflows*
- *More reliable inventories*

### Special Features Include:

- *Quick Disconnect  
Receptacles with optional  
Field Wiring Connectors*
- *One-Touch Field Calibration*

Anderson Instrument Company introduces its latest innovation for measuring liquid level in sanitary applications - the "SX" Level Transmitter. This line of sensors provide superior signal stability. The field tested performance of the "SX" transmitter means the elimination of expensive, repetitive re-calibrations along with protection against costly overflow/run-dry situations that can occur with less stable level transmitters. The 0.2% accuracy experienced at installation can

now be expected a year later!

We've also incorporated a new field calibration feature that provides "one-touch" sensor zeroing as well as simple range calibration, without the need for special tools and fixtures, pressure sources, or removal of the transmitter from the tank. This translates to real cost savings during installation or when adjusting for new application requirements.

Of course the "SX" Transmitter

is available in all standard fitting and range combinations you'll need to fit any sanitary tank application. All variations are CE compliant, meet Intrinsically Safe requirements, 3-A Sanitary Standards, and are backed by a 2-year warranty.

Complete specifications and ordering information are available on the reverse. For more information please visit our Web Site at [www.andinst.com](http://www.andinst.com), or contact your local Authorized Anderson Distributor.



# SX Specifications

## Performance

Level Measurement Ranges: (Factory calibrated at no charge and easily field calibrated within the parameters listed below)

	Minimum	Maximum (URL*)	Proof Pressure
SX5 Series	0-30 " w.c.**	0-140 " w.c.	10 psig
SX6 Series	0-140.1 " w.c.	0-415 " w.c.	30 psig
SX7 Series	0-415.1 " w.c.	0-830 " w.c.	60 psig
SX8 Series	0-830.1 " w.c.	0-1385 " w.c.	100 psig

Calibrated Accuracy: (includes repeatability, hysteresis, and linearity)

± 0.20% of URL at stable calibration temperature

Repeatability:

±0.075% of URL

Hysteresis:

±0.075% of URL

Linearity (BFSL):\*\*\*

±0.05% of URL

Calibration Stability:

Within ±0.2% of URL for one (1) year minimum

Resolution:

Infinite

Process Temperature Limits: -18°C to 130°C (0°F to 265°F)

Ambient Temperature Limits: -9°C to 49°C (15°F to 120°F)

Compensated Temp. Range: -18°C to 121°C (0°F to 250°F)

(process)

Temperature Stability:

±0.02% of Upper Range Limit (URL) per -12°C (10°F)

Over-Range Capacity:

2 times the URL (see table above)

Response Time:

526 mSec

\* URL = Upper Range Limit

\*\* w.c. = water column

\*\*\* BFSL = Best Fit Straight Line

## Power Signal

Loop Power (excitation):

12-40 vdc

Output:

4-20mA dc, 2-wire. Internal test points supplied

Loop Resistance:

1550 ohms (max.) at 40 vdc, 750 ohms (max) at 24 vdc

Cable Recommended:

2 conductor, stranded, 18-24 AWG, shielded with ground 0.17 - 0.26" Cable Sheath OD for use with field wiring connector

Receptacle:

Turck minifast(R) 3-pin, NEMA 4X/IP65 connected or disconnected

## Materials/Construction

Housing Material:

304 and 316 stainless steel finished to 32R<sub>a</sub> max.

Wetted Parts:

316L stainless steel electropolished to 15R<sub>a</sub> max.

Gasket:

Anderson Flush Gasket USP VI

Ratings:

NEMA 4X, IP66, IP67

## Agency Approvals

Hazardous Locations:

Intrinsically safe for use in Class 1, Div. 1, Groups A-D

Electromagnetic Compatibility

(EMC):

CE Compliant

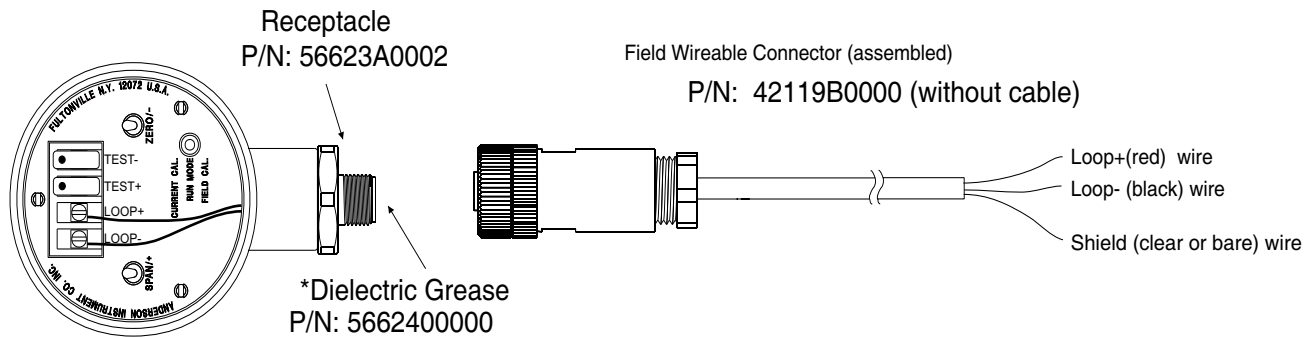
Standards:

3-A compliant; Third party verified in accordance with standard 74-02

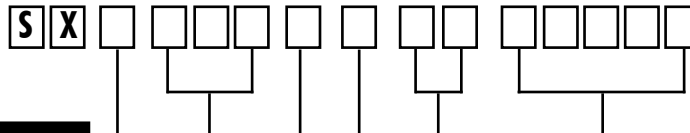
Designed and manufactured to sound engineering practices in accordance with Article 3.3 of the PED 97/23/EC.

Warranty:

All units are covered by a two (2) year warranty against defects in material and workmanship when installed and maintained according to the instruction manual provided.



# How to Order



## SPAN RANGE

- 5 0-30" min to 0-140" max
- 6 0-140.1" to 0-415" max
- 7 0-415.1" to 0-830" max
- 8 0-830.1" to 0-1385" max

## FITTING

- 089 Anderson Flush Mount Long - with USP VI gasket (71060-A3, A5, A7, A9)
- 088 Anderson Flush Mount Short - with USP VI gasket (71060-A4, A6, A8)
- 091 Cherry Burrell Flush Mount Long (insulated tank)
- 090 Cherry Burrell Flush Mount Short (uninsulated tank)
- 092 King Gage Flush Mount Long (1777-3)
- 093 King Gage Flush Mount Medium (1777-1, -6 Standard)
- 094 King Gage Flush Mount Short (1777-2 non-insulated)
- 097 Tank Mate Flush Mount Long\* (208WVE)
- 096 Tank Mate Flush Mount Medium\* (205WVE)
- 095 Tank Mate Flush Mount Short\* (200WVE)
- 004 1-1/2" Tri-Clamp®
- 005 2" Tri-Clamp®
- 059 1-1/2" NPT
- 141 Rosemount / Foxboro Sanitary Spud - Short
- 142 Rosemount / Foxboro Sanitary Spud - Long
- 154 Endress & Hauser Universal Adaptor - short
- 155 Endress & Hauser Universal Adaptor - long

## DIAPHRAGM

- 1 SS-316L Electropolished
- 2 Hastelloy "C" (N/A with King-Gage, Tank Mate, or Endress & Hauser Fittings)

- \* Requires Adapter:  
 57200A0001 (insulated)  
 57200A0002 (uninsulated)

**\*\*Note:**  
 Calibration of span is in units "inches water column".  
 Consult factory for assistance.

## CALIBRATION

- ##### Height in inches w.c.\*\* (to nearest tenth)
- 00000 Field Calibrated

### Examples:

- 10850 1,085.0 inches
- 00305 30.5 inches

## SENSOR WIRING

- 00 Quick Disconnect Receptacle (QDR) w/No Cable
- 01 QDR & Field Wireable Connector (FWC) w/No Cable
- 05 QDR & FWC w/25 FT Cable
- 10 QDR & FWC w/50 FT Cable
- 15 QDR & FWC w/75 FT Cable
- 20 QDR & FWC w/100 FT Cable
- 21 QDR & FWC w/125 FT Cable
- 22 QDR & FWC w/150 FT Cable
- 23 QDR & FWC w/175 FT Cable
- 24 QDR & FWC w/200 FT Cable
- 98 QDR and Liquid Tight Flex 1/2" (16mm) Conduit Connector w/20 FT Cable
- 99 No QDR, no FWC and no Cable (No sensor warranty for water damage)

## MOUNTING

- 0 Horizontal
- 1 Vertical
- 2 Other (specify angle from vertical or from horizontal)

## ACCESSORIES

### Anderson Weld-In Shells for Flush Mount Level Transmitters

- 71060A0003 Insulated Vessel - Standard Flange - 316L
- 71060A0004 Uninsulated Vessel - Standard Flange - 316L
- 71060A0005 Insulated Vessel - Pressure Vessel Flange - 316L
- 71060A0006 Uninsulated Vessel - Pressure Vessel Flange - 316L
- 71060A0009 Insulated Vessel - H/D Press. Vessel Flange - 316L

### Shell Adaptor

- Tank Mate, uninsulated 57200A0002
- Tank Mate, insulated 57200A0001

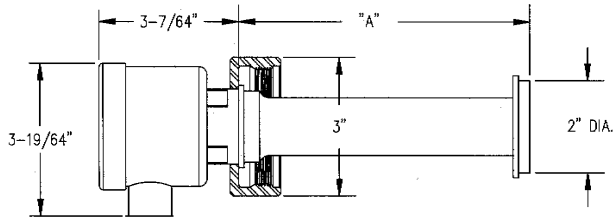
### Gaskets for Flush Mount Level Transmitters

- Anderson USP VI 44348A0003
- Cherry Burrell 44292A0001
- King Gage 36240S0212
- Tank Mate 36240S0123
- Continental 5658900000
- Rosemount/Foxboro 36240E2341

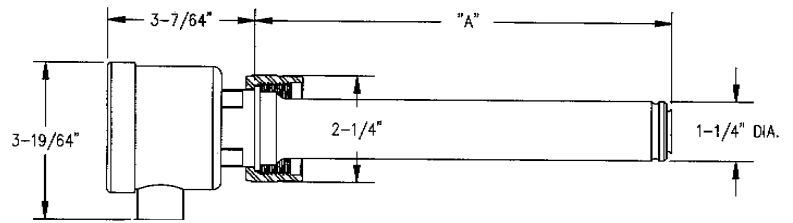
### Sensor Calibration Adaptors

- Anderson fitting 73198A0001
- Cherry Burrell fitting 73198A0002
- King Gage Fitting 73198A0003
- Tankmate 73198A0004

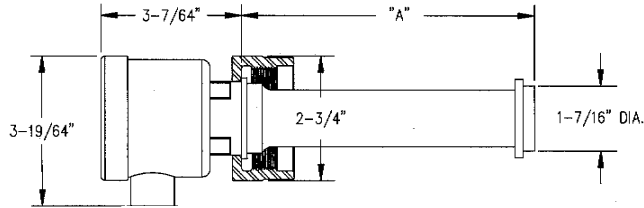
# Sensor Fittings and Dimensions



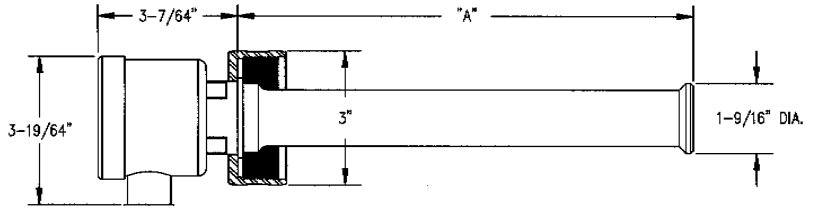
ANDERSON SHELL TYPE	"A"
NON INSULATED	2-3/16
INSULATED	6-1/2



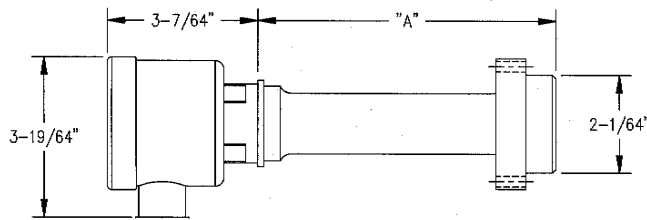
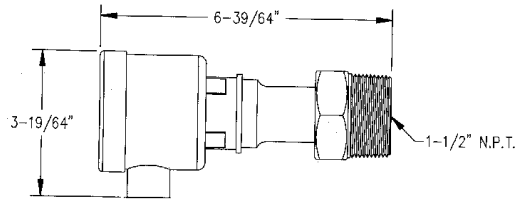
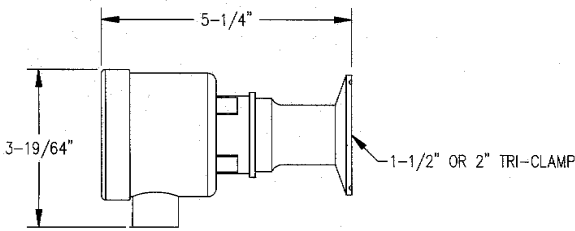
KING SHELL TYPE	"A"
NON INSULATED	2-3/16
STANDARD	6-9/16
LONG	8-13/16



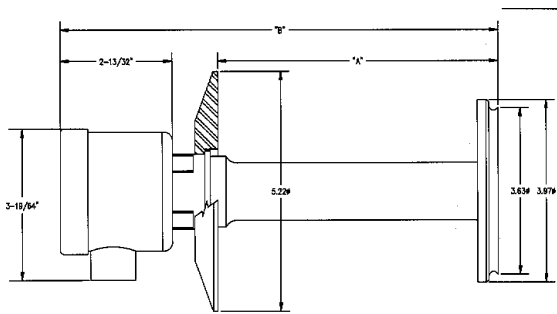
CHERRY BURRELL SHELL TYPE	"A"
NON INSULATED	2-3/16
INSULATED	6-1/2



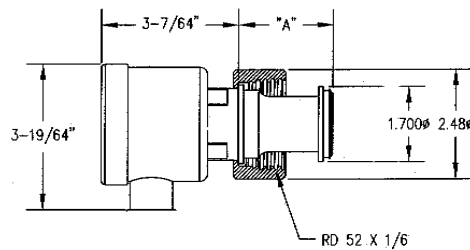
TANK MATE SHELL TYPE	"A"
SHORT	5-7/32
MEDIUM	7-19/64
LONG	10-3/16



CONTINENTAL SHELL TYPE	"A"
NON INSULATED	2-5/32
INSULATED	6-3/16



FITTING	"A" DIM.	"B" DIM.
ROSEMOUNT SHORT	2.11"	5-1/2"
ROSEMOUNT LONG	6.11"	9-1/2"



DESCRIPTION - USE	"A" DIM.
E+H LONG (6" SHELL)	6.60
E+H SHORT (1-9/16" SHELL)	2.16