

5040 - 5040DI PUMP PARTS PRICE LIST

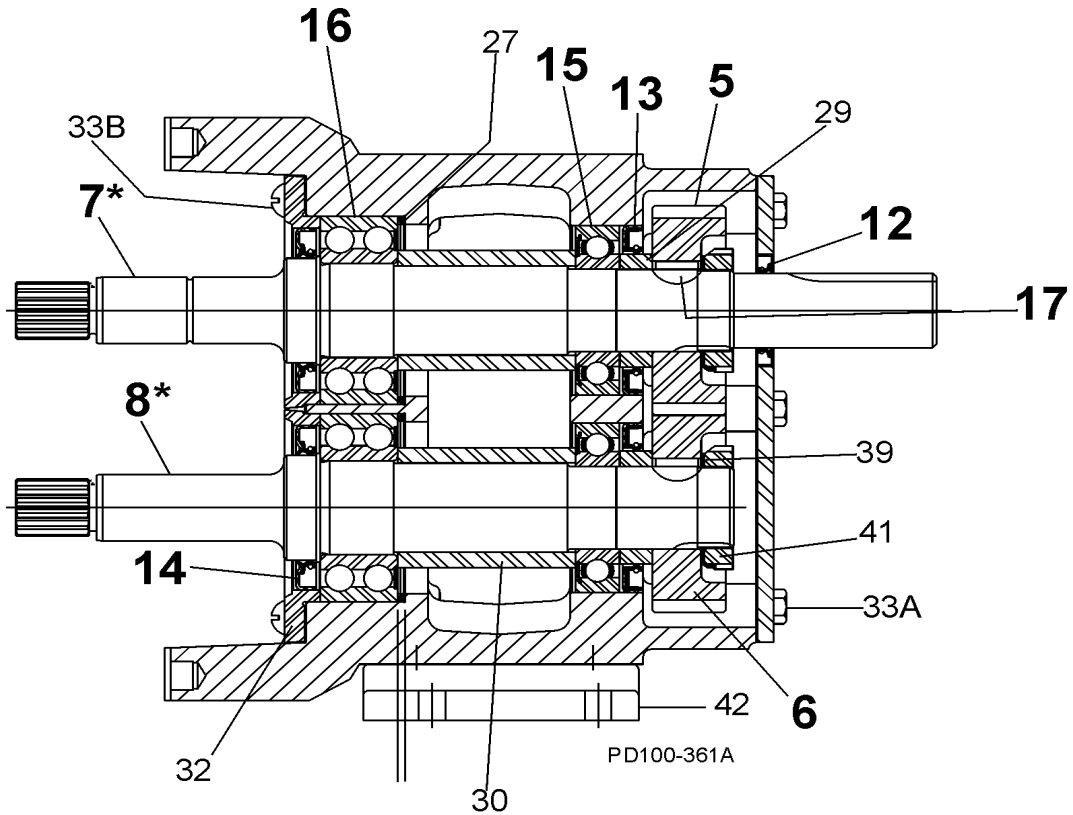
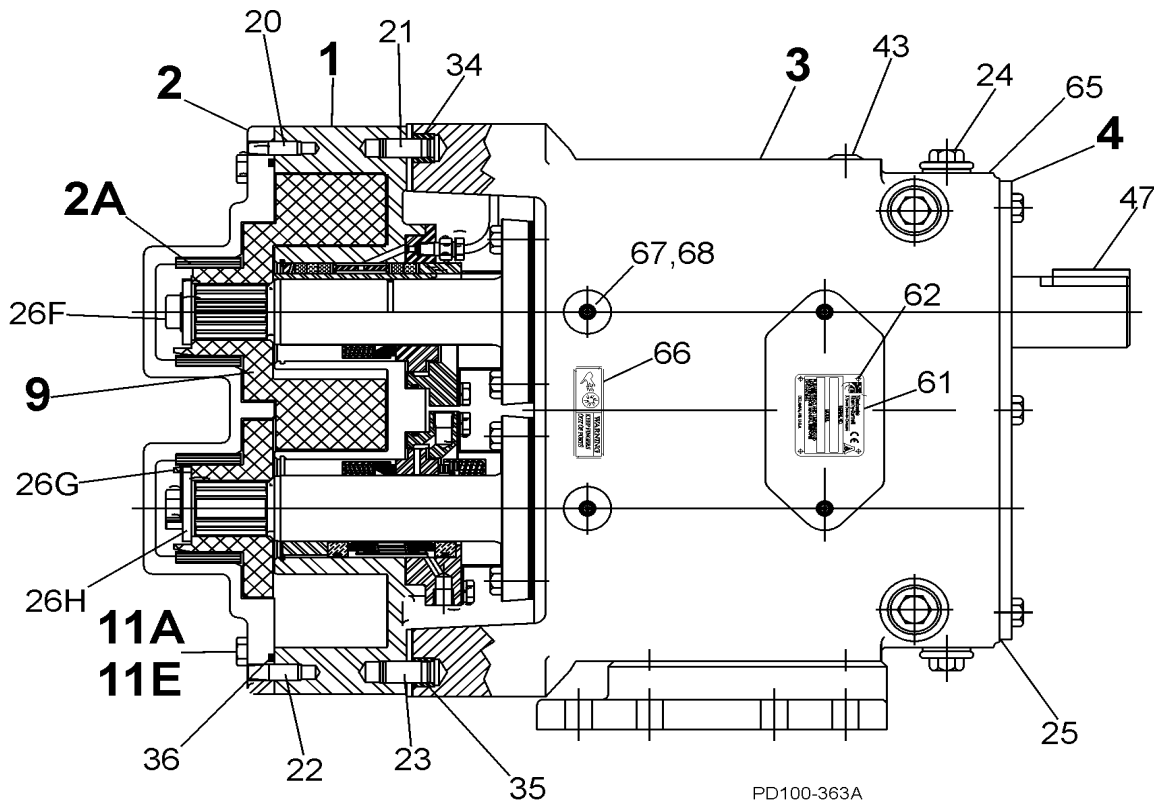
ITEM NO.	DESCRIPTION	QTY. PER PUMP	PART NO.	NOTES
1	5040 Pump Body, 1-1/2" NPT Mech. Seal	1	40058	1
	5040 Pump Body, 1-1/2" NPT, Packing	1	40057	1
	5040 Pump Body, 1-1/2" 150# Flg., Mech. Seal	1	40787	1
	5040 Pump Body, 1-1/2" 150# Flg., Packing	1	40789	1
	5040DI Pump Body, 1-1/2" Female NPT Mech. Seal	1	40883	1
	5040DI Pump Body, 1-1/2" Female NPT, Packing	1	40882	1
2	5040 Pump Cover	1	0B1 002 000	
	5040DI Pump Cover	1	BD1 002 001	
	5040 Jacketed Cover	1	0B1 002 J10	
	Pump Cover Vented - Complete Assembly			
	5040 Manual	1	020 022 001	
2A	Cover Bushing, Carbon	2	0B1 048 000	
	Cover Bushing, Alloy 88	2	0B1 048 W00	
	Cover Bushing, Rulon	2	35382	
3	Gear Case, CI	1	40053	
4	Gear Case Cover, Steel (Includes Item 12 Oil Seal)	1	040 106 000	
5	Gear, Drive Shaft, Spur (Replaces 030 007 001)	1	107999	
6	Gear, Short Shaft, Spur (Replaces 030 007 002)	1	107999	
7	Drive Shaft, Std., Mechanical Seal	1	40065	
	Drive Shaft, Opt.17-4PH, Mech. Seal	1	35343	
	Drive Shaft, Packing	1	40059	
7A/8A*	Shaft Assembly Pusher	1	109351	27
8	Short Shaft, Std., Mechanical Seal	1	40066	
	Short Shaft, Opt.17-4PH, Mech. Seal	1	35344	
	Short Shaft, Packing	1	40060	
9	5040 Rotor, Twin Wing, Alloy 88	2	0B1 010 200	2
	5040 Rotor, Twin Wing, 316SS	2	0B1 010 2S0	2
	5040DI Rotor, Twin Wing, Ductile Iron	1	0B1 010 700	2
11A	HHCS, Long, 5/16-18 x 2.5"	4	30-96	
	HHCS, Long, 5/16-18 x 5.0", Jacketed Cover	4	30-320	
11E	HHCS, Short, 5/16-18 x 1.0"	4	30-34	
	HHCS, Short, 5/16-18 x 3.5", Jacketed Cover		30-298	
12	Oil Seal, Gear Case Cover	1	000 030 013	
13	Oil Seal, Gear Case Rear	2	000 030 014	
14	Grease Seal, Bearing Retainer	2	40062	
	Bearing Isolator, includes Bearing Retainer*	2	X07561-1	28
15	Ball Bearing, Rear	2	030 035 000	
16	Ball Bearing, Front	2	030 036 000	
17	Key, Gear	2	BD0 037 000	

NOTES:

1. Contact Factory with Serial Number of pump for Part Number.
2. Standard clearances and finishes for Rotor Part Numbers shown. Contact Factory for optional clearances and finishes.
27. Recommended tool.
28. See Pump Notes PN20-01.



5040 - 5040DI Pump Parts Diagram



* Note: 7 shown is packing shaft.

8 shown is mechanical seal shaft

Holland
 APPLIED TECHNOLOGIES
 Indianapolis • Chicago • San Juan
www.hollandapt.com

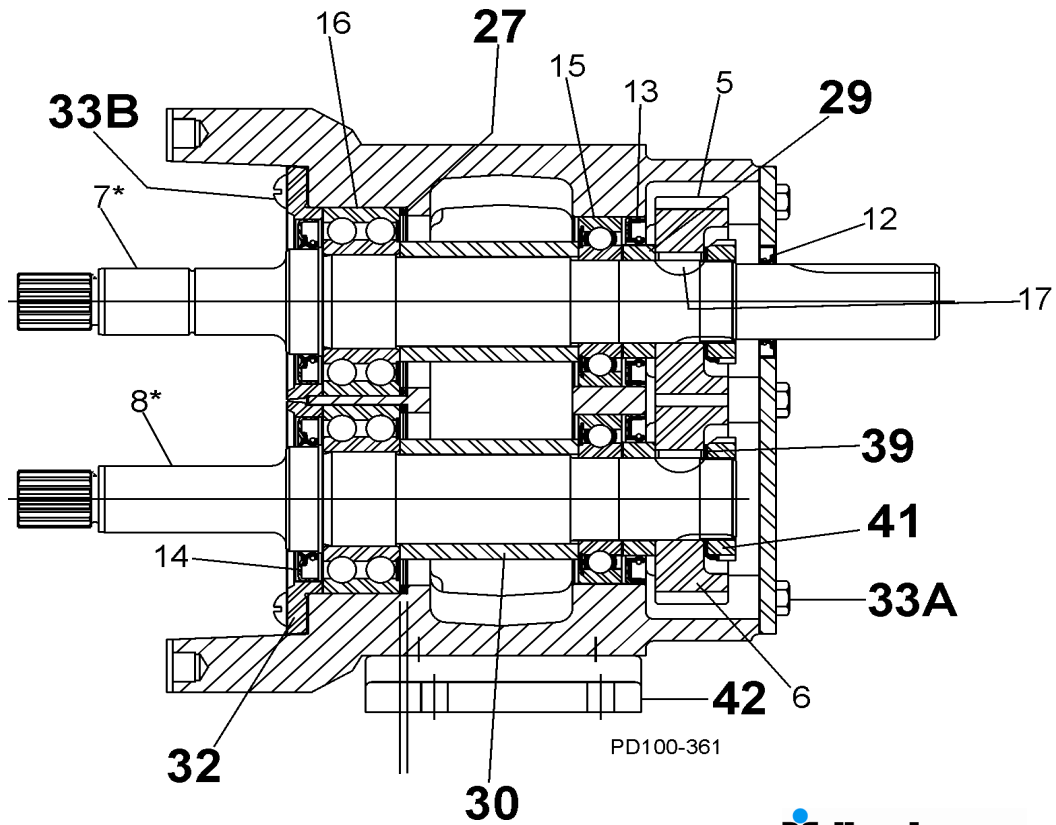
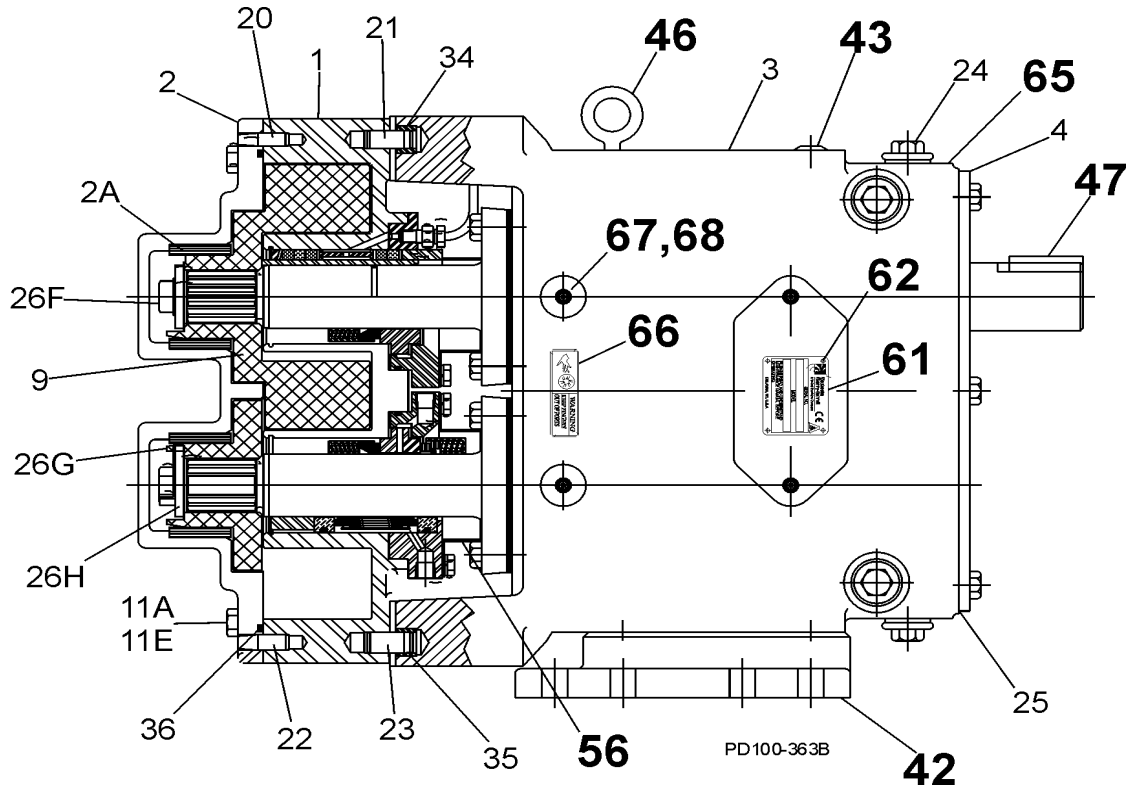
5040 - 5040DI PUMP PARTS PRICE LIST

ITEM NO.	DESCRIPTION	QTY. PER PUMP	PART NO.	NOTES
20	Dowel Pin, Upper Cover Side	1	BD0 040 000	
21	Dowel Pin, Upper Gear Case Side	1	BD0 040 200	
22	Dowel Pin, Lower Cover Side	1	BD0 040 100	
23	Dowel Pin, Lower Gear Case Side	1	BD0 040 300	
24	Plug with Washer, 1/2-20	6	000 046 003	40
	Oil Plug, M20 x 1.5"	5	115798	41, 42
	Oil Level Indicator, M20 x 1.5"	1	115799	41, 42
25	Silicone Sealant	1	000 142 301	
26F	Rotor Retaining HHCS, 1/2-13 x 1.25"	2	30-36X	
26G	Rotor Lock Clip	2	0B1 052 C00	
26H	Washer, Rotor Retainer	2	0B1 052 A00	
27	Shim Kit	2	117890	
29	Spacer, Gear to Rear Bearing	2	030 055 000	
30	Bearing Spacer	2	030 055 001	
31	Retainer, Grease		N/A	
32	Bearing Retainer, Front	2	030 080 000	
33A	5/16-18 x .75" HHCS, Gear Case Cover	6	30-283	
33B	5/16-18 x .75" BSHCS, Bearing Retainer	8	30-296	
33C	5/16" Flat Washer	6	43-194	
34	Dowel Bushing, Upper	1	BD0 116 000	
35	Dowel Bushing, Lower	1	BD0 116 100	
* * * * *	O-Ring, Pump Cover, Buna N	1	N70261	
	O-Ring, Pump Cover, EPDM	1	E70261	
	O-Ring, Pump Cover, FKM	1	V70261	
	O-Ring, Pump Cover, Teflon Encapsulated	1	T80261	
	O-Ring, Pump Cover, Silicone	1	S75261	
39	Lock Washer, Gear	2	CD0 036 W00	
41	Locknut, Gear	2	CD0 036 N00	
41A	Gear Nut Driver	1	109282	27
41B	Gear End Shaft Thread Chaser	1	109288	27
42	Gear Case Shim, CI	1	40323	
43	Plastic Cap Plug	8	000 121 002	
44	3/8-16 x 1.0" SHCS, Gear Case Shim	4	30-344	
45*	Body Retaining Screw, 1/4 -20 x 2"	2	30-211	
46	Eye Bolt		N/A	
47	Key, Coupling - 1/4 x 1/4 x 1-3/4"	1	000 037 002	
48*	Cleanout Plug	2	41013	
56	Shaft Guard	2	111575	
61	Name Plate	1	001 061 015	
62	#2 x .125" RHDS	4	30-355	
65	Caution Plate (Replaces 33-22)	2	33-62	
66	Warning Label	2	33-63	
67	Grease Fitting, 1/8"	4	BD0 092 000	
68	Plastic Cap, Grease Fitting	4	BD0 093 000	

NOTES:

- 27. Recommended tool.
- 40. Pumps shipped prior to 5/15/03
- 41. Pumps shipped after 5/15/03
- 42. You need the oil plug **and** the oil level indicator.

5040 - 5040DI Pump Parts Diagram



* Note: 7 shown is packing shaft.
8 shown is mechanical seal shaft.

Holland
APPLIED TECHNOLOGIES
Indianapolis • Chicago • San Juan
www.hollandapt.com

5040 - 5040DI MECHANICAL SEAL PARTS PRICE LIST

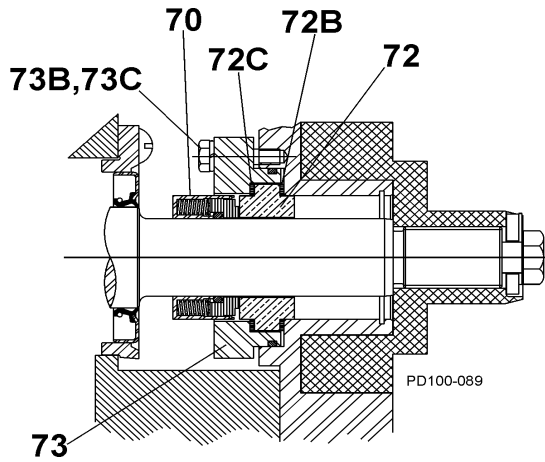
ITEM NO.	DESCRIPTION	QTY. PER PUMP	PART NO.	NOTES
MECHANICAL SEAL PARTS				
SINGLE OUTSIDE SEAL				
70	Crane #8B2 Outside Seal, Carbon	2	0B1 114 FP0	
	Crane #8B2 Outside Seal, Silicon Carbide	2	113637	
72	"T" Seat, Plain, Ceramic	2	025 014 012	
	"T" Seat, Plain, Tungsten Carbide	2	025 014 013	
	"T" Seat, Plain, Silicon Carbide	2	025 014 016	
72B, 72C	"T" Seat Gasket, Inner and Outer, PTFE	4	025 042 001	
73	Gland, Plain	2	0B1 034 001	
73B	HHCS, Gland Bolt, 1/4 - 20 x 1.0"	8	30-93	
73C	Lock Washer, 1/4"	8	43-22	
SINGLE INSIDE SEAL				
* * * * * * *	Crane #9 Inside Seal , Carbon	2	0B1 114 000	
	Crane #9 Inside Seal , Blister Resistent Carbon	2	114845	
	Crane #9 Inside Seal , Ceramic	2	35623	
	Crane #9 Inside Seal , Silicon Carbide	2	35633	
	Crane #9 Inside Seal , Tungsten Carbide	2	35634	
	Crane #9 Inside Seal , Glass Filled Chemlon	2	33864	
	Crane #9 Inside Seal , Carbon w/ 316 & Hast C	2	112532	
* * *	"T" Seat, Plain, Ceramic	2	025 014 012	
	"T" Seat, Plain, Tungsten Carbide	2	025 014 013	
	"T" Seat, Plain, Silicon Carbide	2	025 014 016	
72B, 72C	"T" Seat Gasket, Inner and Outer, PTFE	4	025 042 001	
73	Gland, Plain	2	0B1 034 001	
73B	HHCS, Gland Bolt, 1/4-20 x 1.0"	8	30-93	
73C	Lock Washer, 1/4"	8	43-22	
DOUBLE INSIDE - OUTSIDE SEAL				
* *	Crane #8B2 Outside Seal, Carbon	2	0B1 114 FP0	
	Crane #8B2 Outside Seal, Silicon Carbide	2	113637	
* * * * * * *	Crane #9 Inside Seal , Carbon	2	0B1 114 000	
	Crane #9 Inside Seal , Blister Resistent Carbon	2	114845	
	Crane #9 Inside Seal , Ceramic	2	35623	
	Crane #9 Inside Seal , Silicon Carbide	2	35633	
	Crane #9 Inside Seal , Tungsten Carbide	2	35634	
	Crane #9 Inside Seal , Glass Filled Chemlon	2	33864	
	Crane #9 Inside Seal , Carbon w/ 316 & Hast C	2	112532	
* * *	"T" Seat, Flushed, Ceramic	2	025 014 027	
	"T" Seat, Flushed, Tungsten Carbide	2	025 014 028	
	"T" Seat, Flushed, Silicon Carbide	2	025 014 031	
72B /72C	"T" Seat Gasket, Inner and Outer, PTFE	4	025 042 001	
73A	Gland, Flushed	2	0B1 034 003	
73B	HHCS, Gland Bolt, 1/4 - 20 x 1.0"	8	30-93	
73C	Lock Washer, 1/4"	8	43-22	
* * * *	O-Ring, Gland, FFKM	2	K75147	
	O-Ring, Gland, Buna N	2	N70147	
	O-Ring, Gland, EPDM	2	E70147	
	O-Ring, Gland, FKM	2	V70147	

NOTES:

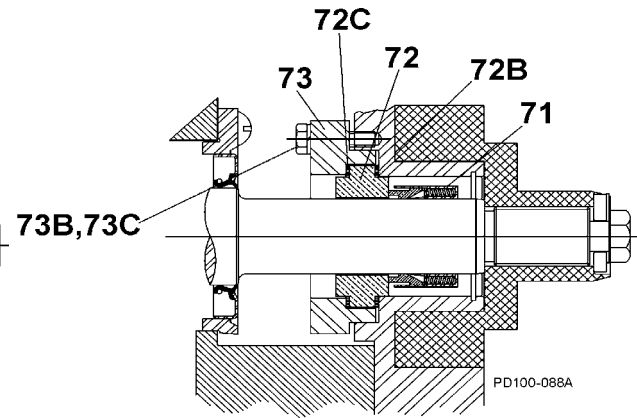
*Recommended Spare Parts



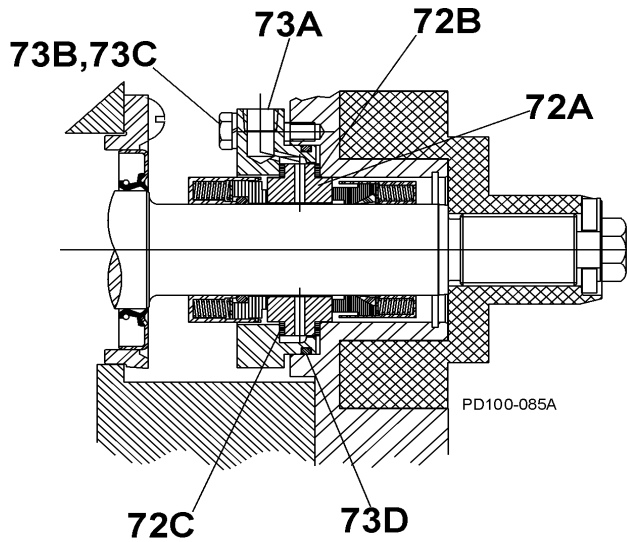
5040 - 5040DI Mechanical Seal Parts Diagram



Single Outside Mechanical Seal



Single Inside Mechanical Seal



Double Inside - Outside Seal

5040 - 5040DI PACKING AND VENTED COVER PARTS PRICE LIST

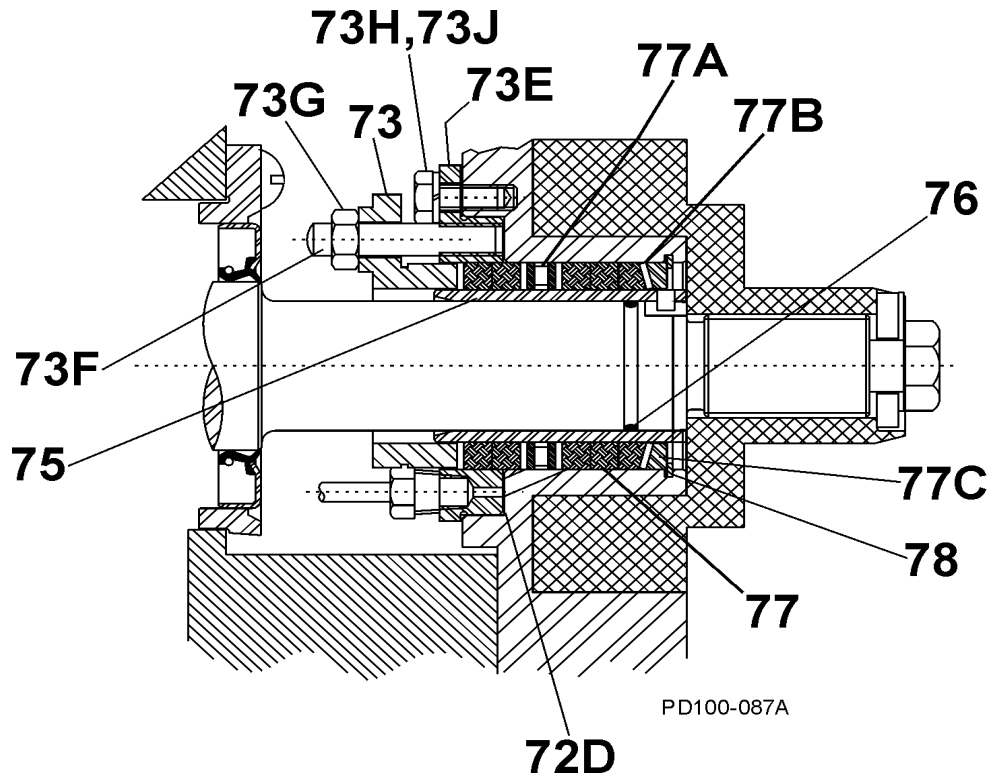
ITEM NO.	DESCRIPTION	QTY. PER PUMP	PART NO.	NOTES
PACKING				
72D	Gasket Insert	2	0B1 043 300	
73	Gland (Replaces 0B1 004 000)	2	112050	
73E	Gland, Insert	2	0B1 050 200	
73F	Stud, Packing Gland	4	200 050 000	
73G	Hex Nut, 5/16"-18	4	36-41	
73H	HHCS, 1/4-20 x 0.5"	8	30-62	
73J	Lock Washer, 1/4"	8	43-22	
* 75	Sleeve, SS	2	0B1 098 000	
* 75	Sleeve, Ceramic Coated	2	0B1 098 001	
* 76	O-Ring, Shaft, Buna N	2	N70024	
* 76	O-Ring, Shaft, EPDM	2	E70024	
* 76	O-Ring, Shaft, FKM	2	V70024	
77	Packing	10 Rings	0B1 033 000	
77A	Lantern Ring	2	0B1 047 000	
77B	Packing Spacer	2	0B1 033 100	
77C	Packing, Retaining Ring	2	0B1 051 000	
78	Retainer	2	40067	
MANUAL VENTED COVER				
101	Relief Cover	1	020 002 001	
102	Adjusting Screw	1	000 060 002	
104	Adjusting Screw Jam Nut	1	36-92	
105	Relief Spring	1	000 076 003	
118	Adapter	1	020 071 000	
119	HHCS, 5/16-18 x .75"	2	30-283	
* 120	Piston O-Ring, Teflon Encap.	2	T80222	
* 120	Piston O-Ring, Buna N	1	N70222	25
* 120	Piston O-Ring, EPDM	1	E70222	25
* 120	Piston O-Ring, FKM	1	V70222	
* 120	Piston O-Ring, FFKM	1	K75222	
121	Bushing, Upper	1	020 116 002	
122	Bushing, Lower	1	020 116 003	
* 123	Adapter O-Ring, Teflon Encap.	1	T80034	
* 123	Adapter O-Ring, Buna N	1	N70034	
* 123	Adapter O-ring, EPDM	1	E70034	
* 123	Adapter O-Ring, FKM	1	V70034	
* 123	Adapter O-ring, FFKM	1	K75034	
124	Spring, Retainer	1	020 176 000	
125	Piston	1	020 073 000	
SEAL FLUSH				
72E	Fittings	4	STD 299 022	32
72F	Tubing, 6"	4	STD 301 002	32
72G*	Pipe Plugs, 1/8"	4	78-9	33

NOTES:

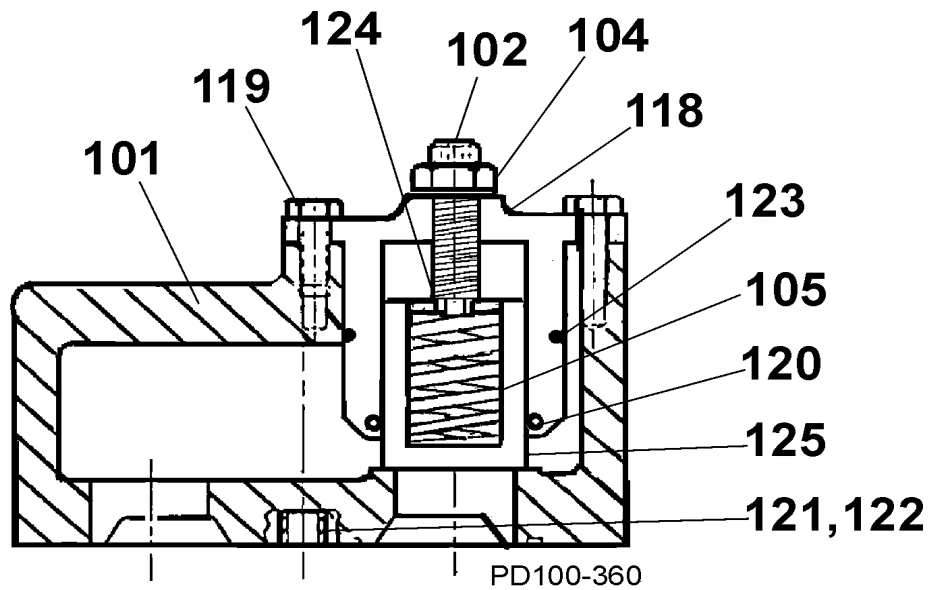
- 25. Sold in packages of 25 only.
- 32. Required for seals with flush only.
- 33. Required for seals without flush only.

*** Recommended Spare Parts**

5040 - 5040DI Packing and Vented Cover Parts Diagram



Packing Diagram



Vented Cover Diagram